

47Z-METER TRUCK-MOUNTED SPECIFICATIONS

Length	39' 1"	(11.90m)
Width	8' 2"	(2.50m)
Height	12' 8"	(3.88m)
Wheelbase	266"	(6,756mm)
Front axle weight	32,831 lbs	(14,892 kg)
Rear axle weight	37,289 lbs	(16,914 kg)
Approx total weight	70,120 lbs	(31,806 kg)

Based on Model MACK MRU 613 with .16H pump cell.

Weights are approximate and include pump, boom, truck, driver and some fuel. Varies with options selected. Dimensions will vary with different truck makes, models and specifications.

BOOM SPECIFICATIONS | Z-FOLD DESIGN

Height & Reach

Vertical reach	151' 3"	(46.10m)
Horizontal reach	134' 11"	(41.10m)
Reach from front of truck*	124' 8"	(38.00m)
Reach depth	106' 4"	(32.40m)
Unfolding height	36' 5"	(11.10m)

5-Section Boom

1st section articulation	90°	
2nd section articulation	180°	
3rd section articulation	180°	
4th section articulation	235°	
5th section articulation	230°	
1st section length	31' 10"	(9.70m)
2nd section length	25' 7"	(7.80m)
3rd section length	24' 7"	(7.49m)
4th section length	27' 11"	(8.50m)
5th section length	28' 3"	(8.60m)

General Specs

Pipeline Size (ID) metric ends	5"	(125mm)
Rotation	365°	
End hose — length	10' 0"	(3.00m)
End hose — diameter	5"	(125mm)
Outrigger spread L - R — front	27' 11"	(8.50m)
hydraulically extend out & down		
Outrigger spread L - R — rear	29' 9"	(9.08m)
hydraulically swing out & extend down		

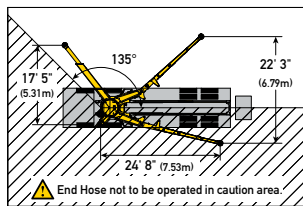
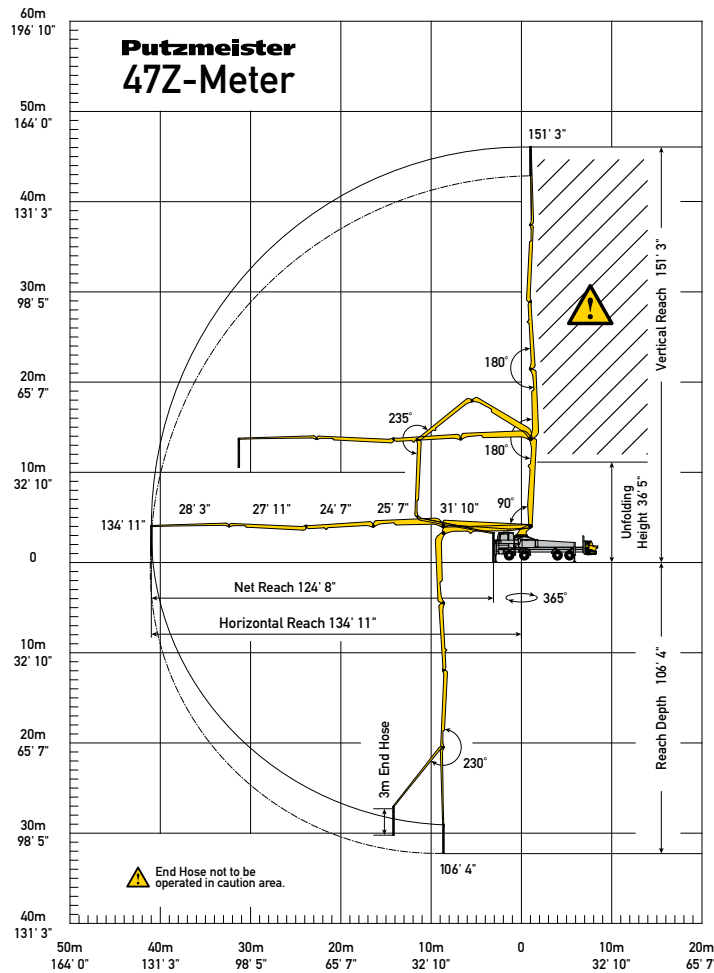
PUMP SPECIFICATIONS

	47Z.16H	47Z.18H LS
Output — rod side	210 yd ³ /hr (160m ³ /hr)	—
— piston side	141 yd ³ /hr (108m ³ /hr)	238 yd ³ /hr (182m ³ /hr)
Pressure — rod side	1,233 psi (85 bar)	—
— piston side	1,885 psi (130 bar)*	1,233 psi (85 bar)
Material cylinder diameter	9" (230mm)	10" (250mm)
Stroke length	83" (2,100mm)	83" (2,100mm)
Maximum strokes per minute — rod side	31	—
— piston side	21	29
Volume control	0-Full	0-Full
Vibrator	Standard	Standard
Hard-chromed material cylinders	Standard	Standard
Hydraulic system	Free Flow	Free Flow
Hydraulic system pressure	5,075 psi (350 bar)	5,075 psi (350 bar)
Differential cylinder diameter	5.5" (140mm)	5" (125mm)
Rod diameter	3.1" (80mm)	3.1" (80mm)
Maximum size aggregate	2.5" (63mm)	2.5" (63mm)
Water tank — pedestal	211 gal (800L)	211 gal (800L)

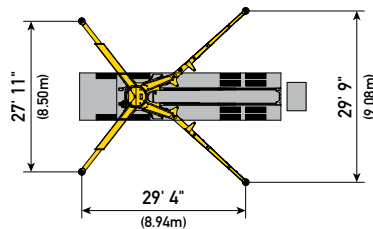
Maximum theoretical values listed.

* Applies to units mounted on PMA stock truck — MACK MRU 613

• Standard delivery line system rated at max line pressure of 1,233 psi (85 bar)

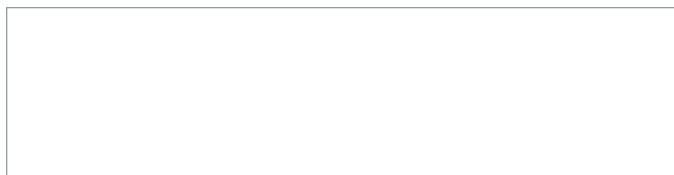


With One-Sided Support (OSS) 135°



Photos and drawings are for illustrative purposes only.

Authorized Distributor



Putzmeister America, Inc. Phone (262) 886-3200
 1733 90th Street Toll-free (800) 884-7210
 Sturtevant, WI 53177 USA Fax (262) 884-6338

CB 4654 US



© Putzmeister America, Inc. 2017 Printed in the USA (2.51701)

PutzmeisterAmerica.com

pnr@putzam.com